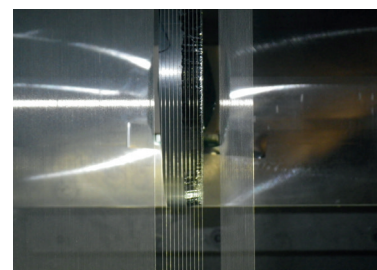
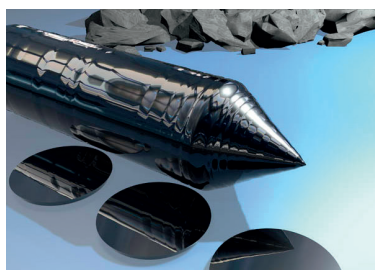


DW 288 S4

MULTI WIRE SAW



WORK PIECE DIMENSIONS:
MAX. Ø 8" × 420 MM OR □ 210 × 420 MM



8" CAPABILITY ENSURES FLEXIBILITY

- ✓ Rigid and temperature optimized design ensures high yield
- ✓ Best in class for 8" semiconductor and sapphire industry
- ✓ Versatile applications for different formats

SMART SLICING TECHNOLOGY FOR SAPPHIRE, HARD AND BRITTLE MATERIALS

HIGHLIGHTS DW 288 S4

- ✔ Based on widely adopted and successful DW 288 product family
- ✔ Sophisticated work piece rocking for maximum precision
- ✔ Only 6 pulleys for optimal use of diamond wire
- ✔ Application and material dependent options available
- ✔ Process driven production assistant on touch screen HMI
- ✔ Recipe generator for 60-step recipe
- ✔ Ready for Industry 4.0
- ✔ Options: adaptive feed for optimized cutting process
- ✔ Options: Diamond Wire Management System (DWMS)



Long load length for more output



Variety of options for more flexibility



Easy accessibility for higher uptime

TECHNICAL DATA	DW 288 S4 FEATURES
Web length [mm]	420
Max. work piece dimensions [mm]	Ø 206 × 420 or □ 210 × 420
Wire speed [m/s]	25 (1500 m/min)
Wire acceleration [m/s ²]	8 (< 4s)
Min. wire diameter [µm]	100
Max. wire tension [N]	45
Rocking principle	Rocking of work piece
Rocking angle [°]	± 12
Wire guide roller axis distance [mm]	540
Cutting fluid tank [l]	240
Machine dimensions [L × W × H] [mm]	3620 × 1780 × 3010
Machine weight [kg]	10500

**GET IN TOUCH WITH US TODAY
TOGETHER WE WILL FIND A SOLUTION
FOR YOUR REQUIREMENTS**

LAPMASTER WOLTERS GMBH
Phone: +49 4331 458 0
wiresaws@lapmaster-wolters.de
www.lapmaster-wolters.de