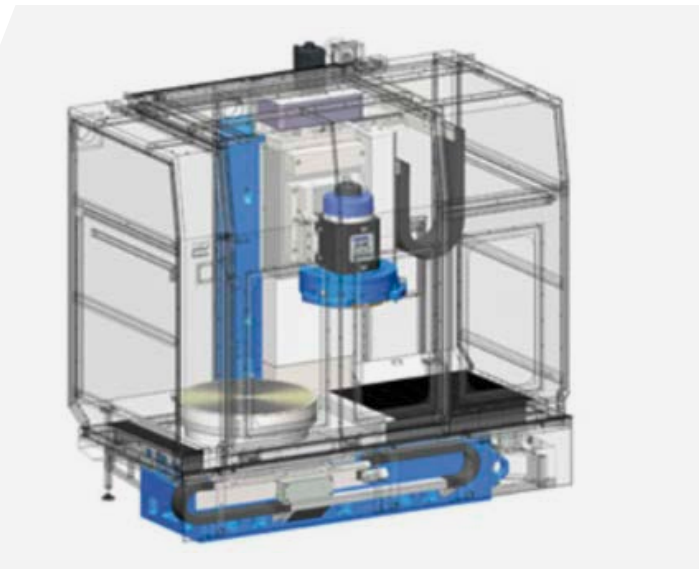
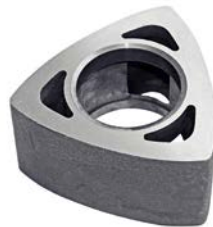


RS

SURFACE GRINDING MACHINE WITH ROTARY TABLE



ROTARY TABLE DIAMETER
600 - 1600 MM



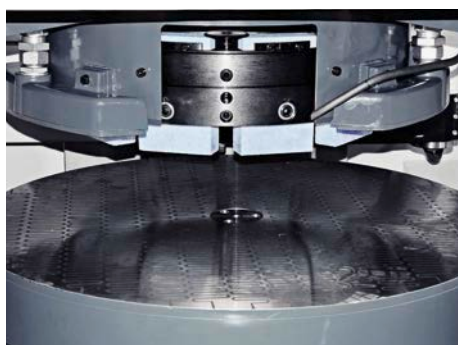
ECONOMIC SURFACE GRINDING

- ✓ Maximum stock removal
- ✓ High accuracies
- ✓ Hydrostatic guideways in the X-axis and the rotary table
- ✓ Linear guided Z-axis
- ✓ Compact and space saving design

WITH HIGH STOCK REMOVAL RATES AND GOOD FLATNESS

HIGHLIGHTS RS

- ✔ Maximum stock removal
- ✔ High accuracies
- ✔ Rigid casting design
- ✔ Hydrostatic guideways in the X-axis and the rotary table
- ✔ Outstanding long-term precision and longevity
- ✔ Ergonomic and easy to operate
- ✔ Compact and space saving design
- ✔ Best damping properties
- ✔ Direct, wearless drive in the rotary table
- ✔ Automatic swivel device (cross cut / beam cut)



Ergonomic change of the grinding segments



Dressing device / KSS-feeding



Compact design

PRODUCT LINE	RS 5	RS 6	RS 8	RS 10	RS 12	RS 14	RS 16
Rotary table diameter [mm]	-	600	800	1000	1200	1400	1600
Grinding wheel diameter [mm]	-	400	400	500	600	600	600
Spindle motor [Nm]	-	585	585	585	1500	1500	1500
Machine weight [kg]	-	9000	11000	13500	16500	19000	21000
Nominal current [A]	-	166	166	166	232	232	232
Connection power [KVA]	-	110	110	110	145	145	145
Working area Ø × H for new segments [mm]	-	600 × 400	800 × 400	1000 × 500	1200 × 600	1400 × 600	1600 × 600
Exterior dimension L × W × H [m]	-	3.35 × 2 × 2.75	3.35 × 2 × 2.75	3.6 × 2.1 × 3.2	3.6 × 2.1 × 3.2	3.8 × 2.3 × 3.4	3.8 × 2.3 × 3.4

GET IN TOUCH WITH US TODAY
TOGETHER WE WILL FIND A SOLUTION
FOR YOUR REQUIREMENTS

KEHREN GMBH

Phone: +49 2242 9197 0

info@kehren.com

www.kehren.com