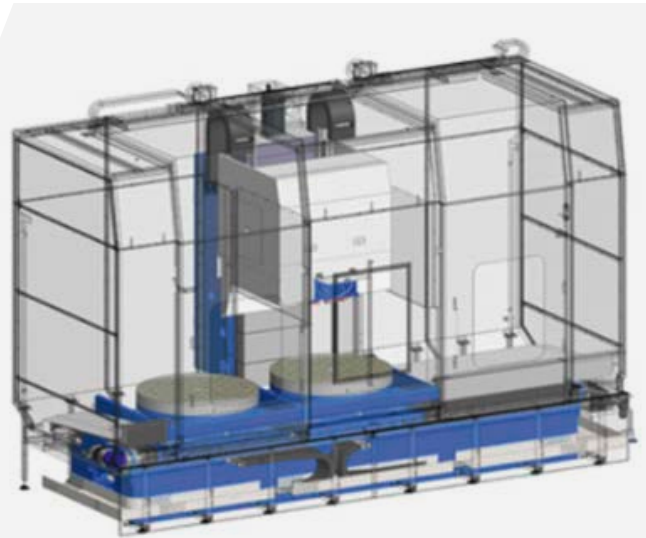


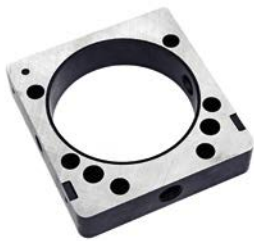


D

SURFACE GRINDING MACHINE WITH TWO ROTARY TABLES



ROTARY TABLE DIAMETER
600 - 1600 MM



ECONOMIC SURFACE GRINDING

- ✓ Maximum stock removal
- ✓ High accuracies
- ✓ Hydrostatic guideways in the X-axis and the rotary table
- ✓ Linear guided Z-axis
- ✓ Compact and space saving design

WITH HIGH STOCK REMOVAL RATES AND GOOD FLATNESS

HIGHLIGHTS D

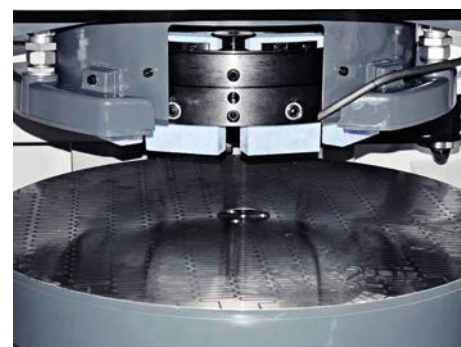
- ✔ Maximum stock removal
- ✔ High accuracies
- ✔ Rigid casting design
- ✔ Hydrostatic guideways in the X-axis and the rotary table
- ✔ Outstanding long-term precision and longevity
- ✔ Ergonomic and easy to operate
- ✔ Compact and space saving design
- ✔ Best damping properties
- ✔ Direct, wearless drive in the rotary table
- ✔ Automatic swivel device (cross cut / beam cut)



Dressing process



Easy to operate



Ergonomic change of the grinding segments

PRODUCT LINE	D 5	D 6	D 8	D 10	D 12	D 14	D 16
Rotary table diameter [mm]	-	2 × 600	2 × 800	2 × 1000	2 × 1200	2 × 1400	2 × 1600
Grinding wheel diameter [mm]	-	400	500	600	700	900	900
Spindle motor [Nm]	-	585	585	585	1500	1500	1500
Machine weight [kg]	-	12000	16000	18500	22500	28500	30000
Nominal current [A]	-	166	166	166	232	232	232
Connection power [KVA]	-	110	110	110	145	145	145
Working area Ø × H for new segments [mm]	-	600 × 400	800 × 400	1000 × 500	1200 × 600	1400 × 600	1600 × 600
Exterior dimension L × W × H [m]	-	5.4 × 2.25 × 3.4	5.4 × 2.25 × 3.4	5.7 × 2.35 × 3.75	5.7 × 2.35 × 3.75	6 × 2.45 × 3.95	6 × 2.45 × 3.95

GET IN TOUCH WITH US TODAY
TOGETHER WE WILL FIND A SOLUTION
FOR YOUR REQUIREMENTS

KEHREN GMBH

Phone: +49 2242 9197 0

info@kehren.com

www.kehren.com