

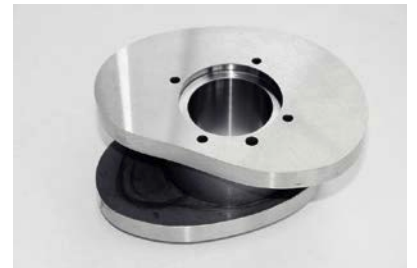


## Ri

### VERTICAL GRINDING CENTERS



NUMBER OF SPINDLES: 1-4  
GRINDING DIAMETER: 700 MM - 1800 MM



## GRINDING WITH PERFECTION

- ✓ Wide range of applications
- ✓ Rigid casting design
- ✓ Hydrostatic guide ways in the X- and C-axis
- ✓ Outstanding long-term precision and longevity

## MAXIMUM PRECISION AND ECONOMY IN ONE SETTING

## HIGHLIGHTS Ri

- ✔ Ergonomically and easy to operate
- ✔ Compact and space saving design
- ✔ To increase productivity all Ri machines can be supplied with two rotary tables
- ✔ The product line Ri 6 to Ri 12 can be equipped with an additional Y-Axis for horizontal machining
- ✔ Various tool changing systems are available for all product lines
- ✔ The machine can also be equipped with a chip conveyor
- ✔ All product lines can be delivered in standard or in grindturn design. This includes a turning tool adapter instead of a grinding spindle
- ✔ The following operations can be machined in only one set-up:
  - faces
  - internal and external diameters
  - internal and external tapers
  - radii
  - noncircular and jig grinding
  - serrations
  - hard turning/ hard milling



Dressing process



Circular grinding



Longitudinal grinding

PRODUCT LINE	Ri 5	Ri 6	Ri 8	Ri 10	Ri 12	Ri 14	Ri 16
MODEL	Ri 5-1 to Ri 5-4	Ri 6-1 to Ri 6-4	Ri 8-1 to Ri 8-4	Ri 10-1 to Ri 10-4	Ri 12-2 to Ri 12-5	Ri 14-2 to Ri 14-5	Ri 16-2 to Ri 16-5
Number of spindles	1 to 4	1 to 4	1 to 4	1 to 4	1 to 4	1 to 4	1 to 4
Table diameter [mm]	500	600	800	1000	1200	1400	1600
Grinding diameter [mm]	700	1200	1200	1200	1500	1500	1800
Table load [kg]	1500	2000	2000	2000	5000	5000	5000
Machine weight [kg]	15000	17000	18000	20000	24000	26000	28000
Nominal current [A]	62	62	62	110	110	110	110
Connection power [KVA]	62	62	62	70	70	70	70
Working area [mm]	D: 700 H: 500 <sup>1</sup>	D: 1225 H: 550 <sup>1</sup>	D: 1225 H: 550 <sup>1</sup>	D: 1225 H: 650 <sup>2</sup>	D: 1500 H: 1050 <sup>3</sup>	D: 1500 H: 950 <sup>3</sup>	D: 1800 H: 950 <sup>3</sup>
Exterior dimension [mm]	X: 4250 Y: 2400 Z: 3900	X: 4600 Y: 2500 Z: 4050	X: 4600 Y: 2500 Z: 4050	X: 4600 Y: 2500 Z: 4400	X: 6800 Y: 3200 Z: 5600	X: 6800 Y: 3200 Z: 5600	X: 6800 Y: 3300 Z: 5800
				<sup>1</sup> with MSV 140 × 300	<sup>2</sup> with MSV 140 × 400	<sup>3</sup> with MSV 140 × 500	

**GET IN TOUCH WITH US TODAY**  
**TOGETHER WE WILL FIND A SOLUTION**  
**FOR YOUR REQUIREMENTS**

**KEHREN GMBH**

Phone: +49 2242 9197 0

info@kehren.com

www.kehren.com