

MODEL 56

LAPMASTER®
WOLTERS

PRECISION OPEN FACE FLAT LAPPING MACHINE



The Lapmaster Model 56 machine is an updated version of the Model 48, with a larger diameter lap plate and support plate and correspondingly larger conditioning rings.

The serrated lap plate is made up of twenty four individual segments which are bolted to the support plate.

The height of the surrounding worktable can be adjusted so that it can be set just above the lap plate surface to prevent the sharp edge being exposed.

The lap plate drive system uses a separate motor and worm and wheel reduction gearbox with multibelt drive and is mounted in a substantial floor standing base. The base is fab-

ricated from welded hollow-section steel, clad with removable panels for maintenance. The electrical controls are housed in a console mounted at the front of the machine, and a second emergency stop button is fitted at the rear of the machine.

The machine uses a free abrasive slurry, which is supplied from a separate free standing reservoir, equipped with a pump and driven blade stirrer. A diamond slurry dispensing system can also be fitted if required.

This machine is also available in pneumatic lift version and as an open face machine with three special size conditioning rings.

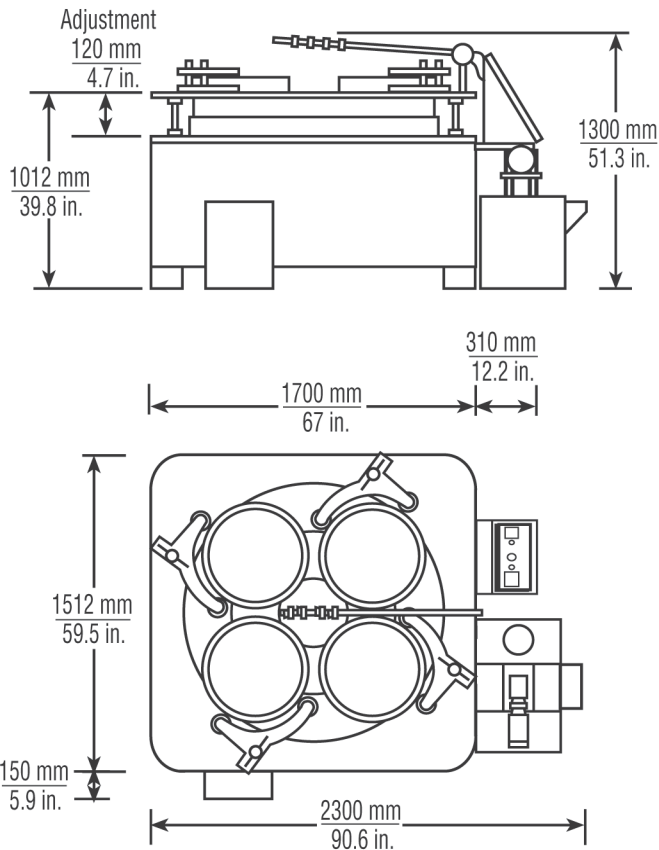
STANDARD FEATURES

- Heavy duty floor standing base, with integrally mounted drive motor, and reduction gearbox, abrasive distribution system, complete with control panel.
- Heavy duty work table, vertically adjustable.
- Range of loads for pressure weights (machine connected to 4 bar supply.) 47kg/103lbs to 488kg/1077lbs. Controls for raise /lower are of two hand anti-tie down type.
- Four conditioning rings, with adjustable roller bearing yoke assemblies to maintain lap plate flatness.
- Freestanding abrasive system complete with pump (0.24kW/0.3hp) driven stirrer (0.37kW/0.5hp) tank (115 litres) and multiple point distribution.
- High torque drive unit consisting of 11kW/15hp motor and reduction gearbox. An electronic soft start unit is fitted as standard which smoothly accelerates the lap plate from standstill to full speed, 48rpm, over a controlled time period.
- Electrical system wired for 220V 3 phase 50Hz or 380V 3 phase 50Hz or 415V 3 phase 50Hz with operator controls at 110V. Complies with EN 60 204.
- Operator control panel with start and stop controls and multiple range, automatic cycle timer.
- 37 litre capacity waste container.

OPTIONAL FEATURES

- 3-ring model. (I.D. 578mm/22.8")
- Variable speed lap drive (using frequency inverter)
- Water cooled lap plates.
- Non - standard voltages.
- Enlarged, moveable work table to improve multiple parts handling.

MODEL 56 - PRECISION OPEN FACE FLAT LAPPING MACHINE



Packing Specifications
Weight: 4039 kg/8906 lbs.
Export packed in 3 wooden cases:
2760mm x 2450mm x 2210mm
(105in X 96in X 87in)
610mm x 610mm x 740mm
(24in x 24in x 29in)
955mm x 800mm x 860mm
(38in x 32in x 34in)
Gross weight: 4483 kg/9885 lbs.

STANDARD SPECIFICATIONS

- Cast iron serrated lap plate (consisting of twenty four individual segments) 1422mm O.D. x 368mm I.D. 56" O.D. X 14.5" I.D. Wear life 100mm/4.0".
- Four high density cast iron serrated conditioning rings. 585mm O.D. x 530mm I.D. 23.0" O.D. x 20.8" I.D. Wear life 70mm/2.8".
- Four work holder blanks.
- Starter sample of Lapmaster Abrasive.
- Starter sample of Lapmaster Vehicle.
- Set of Allen Keys.
- Operation and Maintenance Manual

NOTE: No pressure weights or felt pads are supplied normally, as for most work using this size of machine sufficient lapping load is obtained from the weight of the components themselves.

These items can be offered on request.

APPROXIMATE WEIGHT

- 8906 lbs/ 4039 kg

APPROXIMATE DIMENSIONS

- 90.6" x 59.5" x 51.3" /
2300 mm x 1512 mm x 1300 mm

LAPMASTER WOLTERS

501 W. Algonquin Rd. Mount Prospect, IL 60056

T: 224.659.7101 F: 224.659.7103 E: sales@lapmaster.com

www.lapmaster.com

