






# MODEL 56

PRECISION OPEN FACE FLAT LAPPING MACHINE



PLATE-DIAMETER 56" (1422 MM)  
VERSIONS: 3 OR 4 RINGS  
TYPE: SINGLE SIDED

## MEETING TODAY'S PRECISION SURFACING REQUIREMENTS

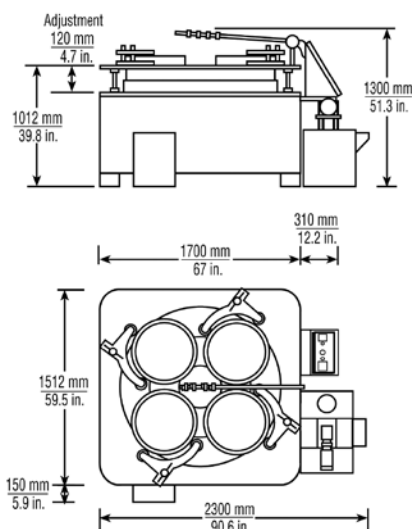
-  Heavy duty floor standing base, with integrally mounted drive motor, and reduction gearbox, abrasive distribution system, complete with control panel
-  Heavy duty work table, vertically adjustable
-  Three / four conditioning rings, with adjustable, sealed roller bearing yoke assemblies to maintain lap flatness
-  Electrical system wired for 220 V, 3 phase, 50 Hz or 380V, 3 phase, 50 Hz or 415 V, 3 phase, 50 Hz
-  Operator controls at 100V, complies with EN 60 204

ACHIEVING HIGH STANDARDS OF FLATNESS AND SURFACE FINISH



**HIGHLIGHTS MODEL 56 (OPEN FACE, 3 OR 4 RINGS)**

- ✔ Freestanding abrasive system complete with pump and driven stirrer tank with multiple point distribution
- ✔ High torque drive unit consisting of 11kW/15 hp motor and reduction gearbox. Lap plate speed 48 rpm
- ✔ Operator panel with start/stop controls and multiple range digital process timer
- ✔ Waste container



Packing Specifications  
 Weight: 4039 kg/8906 lbs.  
 Export packed in 3 wooden cases:  
 2760mm x 2450mm x 2210mm  
 (105in X 96in X 87in)  
 610mm x 610mm x 740mm  
 (24in x 24in x 29in)  
 955mm x 800mm x 860mm  
 (38in x 32in x 34in)  
 Gross weight: 4483 kg/9885 lbs.

**STANDARD SPECIFICATIONS**

- Cast iron segmented lapping plate. 1422 mm O.D. x 368 mm I.D. / 14.5" O.D. x 13" I.D.
- Three / four high density cast iron serrated conditioning rings. 585 mm O.D. x 530 mm I.D. / 23" O.D. x 20.9" I.D.
- Three / four work holder blanks
- Three / four felt pads
- Starter sample of Lapmaster Abrasive
- Starter sample of Lapmaster Vehicle
- Set of Allen Keys
- Operation and Maintenance Manual

**APPROXIMATE WEIGHT**

- 8906 lbs / 4039 kg

**APPROXIMATE DIMENSIONS**

- 90.6" x 59.5" x 51.3"  
 2300 mm x 1512 mm x 1300 mm

**GET IN TOUCH WITH US TODAY  
 TOGETHER WE WILL FIND A SOLUTION  
 FOR YOUR REQUIREMENTS**

**LAPMASTER WOLTERS**

Phone: 1 877 352 8637  
 sales@lapmaster-wolters.com  
 www.lapmaster-wolters.com