

MODEL 20

PRECISION OPEN FACE / PNEUMATIC LIFT FLAT LAPPING MACHINE



Open face version (left), pneumatic lift version



PLATE-DIAMETER 20" (508 MM)
VERSIONS: 3 RINGS
TYPE: SINGLE SIDED

MEETING TODAY'S PRECISION SURFACING REQUIREMENTS

- ✓ Heavy duty carbon steel weldment base
- ✓ Wrap-around worktable facilitates parts handling
- ✓ Three (adjustable) conditioning rings with roller yoke and bearing assemblies facilitates in-process plate flatness control
- ✓ Abrasive feed system designed for water or oil based lapping slurries
- ✓ Automatic digital cycle timer
- ✓ Standard electrics: 110V, 1 ph, 60 Hz
- ✓ High torque drive unit with 1.0 HP / 0.75 kW motor and gear reducer

ACHIEVING HIGH STANDARDS OF FLATNESS AND SURFACE FINISH

HIGHLIGHTS MODEL 20 (OPEN FACE / PNEUMATIC LIFT)

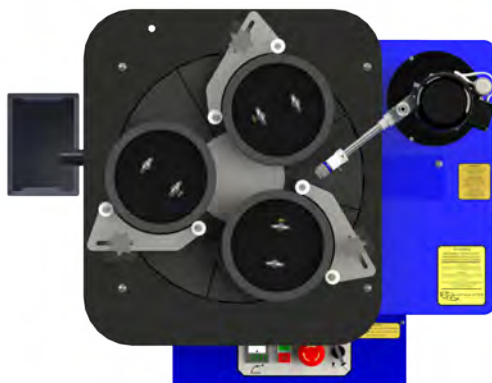
- ✔ Open lift version: removable waste container
- ✔ Pneumatic lift version: OSHA control circuitry and air logic which provides total operator safety through two-hand, anti-tie down operation of the pressure plates

OPTIONAL FEATURES

- ✔ Soft-start (to cushion start-up)
- ✔ Electronic variable speed drive, 0-70 rpm
- ✔ Diamond slurry dispensing systems
- ✔ Various lapping/polishing plates
- ✔ Non-standard voltages
- ✔ Custom machines and tooling

STANDARD SPECIFICATIONS

- High density, cast iron radially serrated lapping plate 508 mm O.D. × 127 mm I.D. / 20" O.D. × 5" I.D.
- Three high density cast iron serrated conditioning rings 229 mm O.D. × 191 mm I.D. / 9" O.D. × 7.5" I.D.
- Three high density, cast iron pressure plates with lifting eye-bolts 7⁷/₁₆" dia. × 1¹/₂" thick / 189 mm dia. × 38 mm thick
- 20" / 508 mm hardened straight edge
- Three micarta workholder blank discs 7⁷/₁₆" dia. × 1¹/₈" thick / 189 mm dia. × 3.2 mm thick
- Three pressure pads 7⁷/₁₆" dia. × 1¹/₂" thick / 189 mm dia. × 13 mm thick
- Lap plate lifting tool
- Starter sample of Lapmaster abrasive
- Starter sample of Lapmaster vehicle
- Allen Wrench
- Operation and maintenance manual


Open face version
Pneumatic lift version
APPROXIMATE WEIGHT

- Open face:
435 lbs / 196 kg
- Pneumatic lift:
530 lbs / 239 kg

APPROXIMATE DIMENSIONS

- Open face:
33.46" L × 30.31" W × 22.6" H
- 850 mm L × 770 mm W × 575 mm H
- Pneumatic lift:
35.03" × 32.67" × 45.9" / 890 mm × 830 mm × 1167 mm

GET IN TOUCH WITH US TODAY
TOGETHER WE WILL FIND A SOLUTION
FOR YOUR REQUIREMENTS

LAPMASTER WOLTERS

Phone: 1 877 352 8637

sales@lapmaster-wolters.com
www.lapmaster-wolters.com