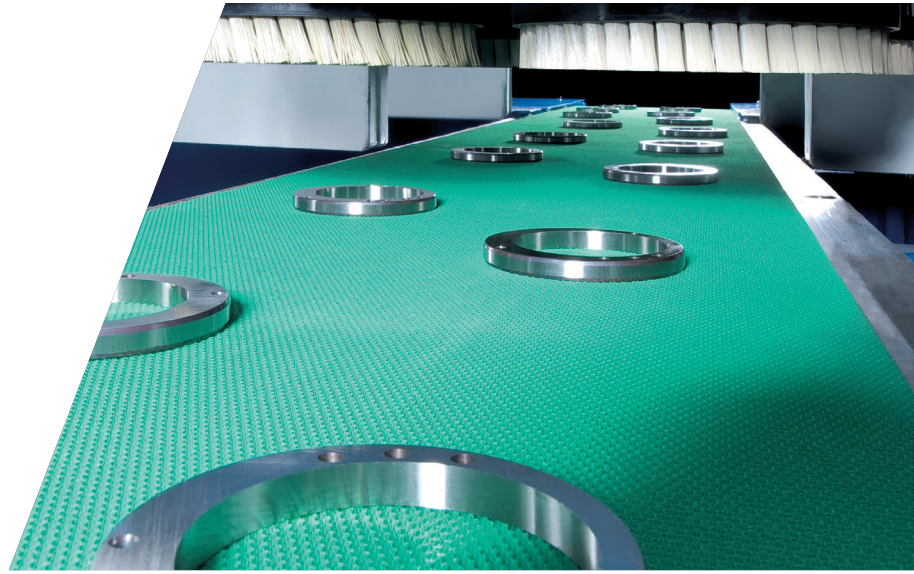
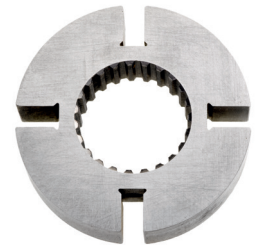


BD 300-L

HIGH-PRECISION ECONOMICAL DEBURRING OF FLAT WORK PIECES



WORK PIECES UP TO
270 MM DIAMETER
50 MM THICKNESS



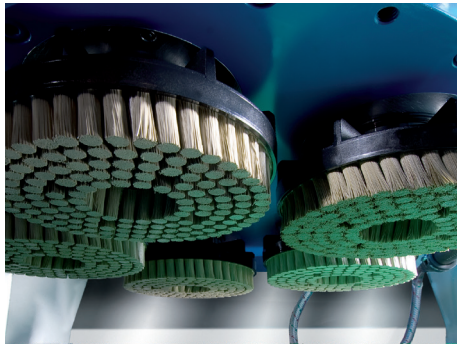
PRODUCTIVITY REDEFINED

- ✓ 1-4 Burr-Ex[®] deburring units
- ✓ Wide range of solutions in the area of deburring technology and defined edge rounding
- ✓ Removal of primary and secondary burrs
- ✓ Surface improvement
- ✓ Easy integration into existing and new production lines

HIGH-SPEED DEBURRING FOR MAXIMUM PRODUCTIVITY

HIGHLIGHTS BD 300-L

- ✔ Good accessibility, easy to service and maintain, safe and simple operation
- ✔ Integrated demagnetizing unit
- ✔ Simple and very fast tool change with magnets as tool holder
- ✔ Automatic tool length measurement
- ✔ Flip-over concepts for double-side machining available
- ✔ Stable welded steel frame ensures high process precision
- ✔ Good accessibility and maintenance friendly
- ✔ Individual process development ensures highest productivity
- ✔ High process stability
- ✔ Automatic tool wear compensation for maximum accuracy
- ✔ Quick and easy adjustment for different work pieces
- ✔ Siemens PLC Control and Siemens 12" Touch Panel
- ✔ Remote maintenance solution RangeCare® via mobile communications or VPN



Burr-Ex® deburring unit



BD 300-L long basic machine with up to four deburring units



BD 300-L with flip-over device for double-side machining for magnetic work pieces

TECHNICAL DATA	BD 300-L
Max. work piece width (mm)	270
– with flip-over device	125
Max. work piece height (mm)	50
Burr-Ex® deburring units	
– short basic machine version	1–2 deburring units
– long basic machine version	3–4 deburring units
Tool drive power (kW)	5.5
Tool rotation speed (rpm)	300–3000
Head drive power (kW)	1.5
Head rotation speed (rpm)	30–300
Deburring tools per station (qty)	5
Deburring tool Ø (mm)	150
Transport belt speed (m/min)	0.5–10/12
Transport belt width (mm)	300
Dimensions (H × W × D) (mm)	
– short basic machine version	2540 × 3070 × 1700
– long basic machine version	2540 × 4390 × 1700



A small selection of brush tools used

GET IN TOUCH WITH US TODAY
TOGETHER WE WILL FIND A SOLUTION
FOR YOUR REQUIREMENTS

LAPMASTER WOLTERS GMBH

Phone: +49 4331 458 0
 deburring@lapmaster-wolters.de
 www.lapmaster-wolters.de